

# 818C SPECIFICATION >>>



## ENGINE

Tier	BS III
Make	Kirloskar 4R1040TC
Gross Power	76 HP (56 KW) @ 2,200 rpm
Net Power	68 HP (51 KW) @ 2,200 rpm
Peak Torque	300 N-m @ 1,500 rpm
Displacement	4.1 L
Torque Rise %	23.40%
Number of Cylinders	4
Aspiration	Turbocharge

## TRANSMISSION

Transmission Model	BD05L1
Transmission Type	Counter shaft-type power shift
Transmission Configuration	2f-2r
Torque Converter	3 Element-single stage,single phrase
Maximum Travel Speed,fwd	28.1 km/h
Maximum Travel Speed,rev	10.1 km/h
Number of Speed,fwd	2
Number of Speed,rev	2

## AXLES

Differential Front Type	Conventional only
Differential Rear Type	Conventional only
Axle Oscillation	11°

## STEERING PUMP - EATON

Steering Configuration	Articulated
Steering Relief Pressure	14 MPa

## BRAKES

Service Brake Type	Caliper
Service Brake Actuation	Air over hydraulic
Parking Brake Type	Shoe/drum
Parking Brake Actuation	Mechanical

## HYDRAULIC SYSTEM

Main Pump Type	Gear Pump
Main Relief Pressure	18 MPa
Boom Lifting Time	4.46 sec
Dump Time	0.66 sec
Float Down Time	2.72 sec
Fastest Total Cycle Time	7.84 sec

## LOADER PERFORMANCE WITH STANDARD BUCKET

Tipping Load	4,150 Kg
Full turn Tipping Load	3,671 Kg
Bucket Breakout Force	55.4 kN
Maximum Dump Angle at Full Height	45±1°
Maximum gradability	24°
Dump Clearance at Full Height Discharge	2,558 mm
Dump Reach at Full Height Discharge	845 mm
Maximum Hinge Pin Height	3,239 mm
Maximum Digging Depth, Bucket Level	40 mm
Bucket Rollback at Ground Level	45°
Bucket Rollback at Carry	51°
Bucket Rollback at Maximum Height	62°

## BUCKET PERFORMANCE

Reference Bucket	1.0 m <sup>3</sup> General Bucket
------------------	-----------------------------------

## DIMENSIONS

Length with Bucket Down	5,907 mm
Width Over Tires	1,940 mm
Wheelbase	2,200 mm
Wheel Tread	1,520 mm
Ground Clearance	285 mm
Turn Angle, Either Side	38°
Rear Angle of Departure	24°
Turning Radius, Outside of Tire	4,208 mm
Turning Radius, Center of Tire	4,003 mm
Turning Radius, Bucket Carry	4,702 mm

## TIRES

Tire Size	16/70-20
-----------	----------

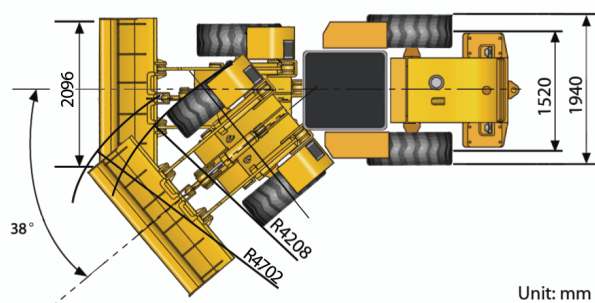
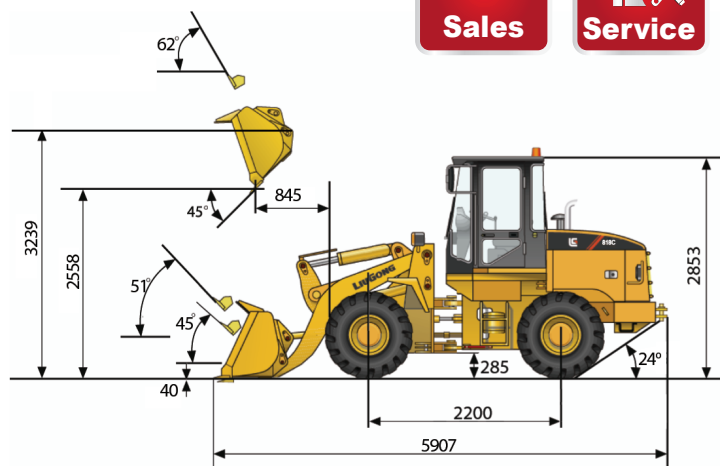
## OPERATING WEIGHTS

Operating Weight	5,640 kg
------------------	----------

## SERVICE CAPACITIES

Fuel Tank	100 L
Engine Oil	12 L
Cooling System	21 L
Hydraulic Reservoir	78 L
Transmission and Torque Converter	20 L
Axles, each	8 L

\*Std. = Standard  
\*LB. = Long Boom



Unit: mm

# 818C Wheel Loader

**LIUGONG**  
MADE IN INDIA

TOUGH WORLD. TOUGH EQUIPMENT.



**Used in construction to move aside or load construction materials onto another type of machines.**

Engine	Kirloskar 4R1040TC
Gross Power	56 kW @ 2,200 rpm
Payload	1,800 Kg
Operating Weight	5,640 Kg
Bucket Breakout Force	55.4 kN
Main Relief Pressure	18 MPa

